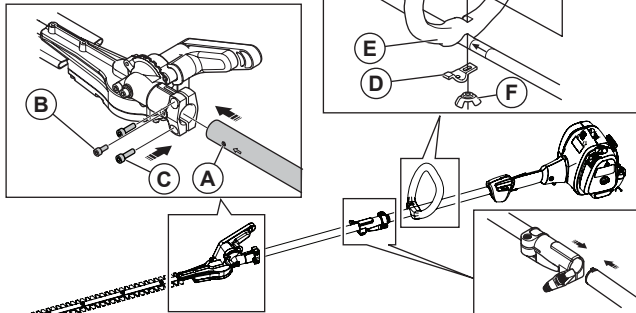


Quick-start guide

1 See Operator's manual for detailed starting instructions.

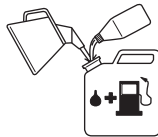
2 Remove the set screw from the cutting head. Align the arrow on the shaft to the hole in the cutting head. Push the shaft into the cutting head you see the hole (A) through the cutting head. Install and tighten the set screw (B). Tighten the clamp screws (C).

Attach loop handle to bracket by inserting TAB (D) into SLOT (E) in handle. Insert BOLT (F) through handle, shaft, bracket and into wing nut (G).

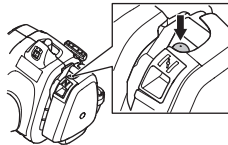


Push the shaft into the coupling until it clicks in position.

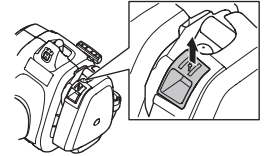
3 Set unit on a flat surface. Mix gasoline and 2-cycle oil at 50:1 ratio. Shake well. Pour into fuel tank.



4 Press primer bulb 10 times.



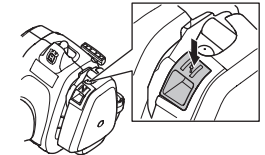
5 Set choke lever to FULL position.



6 Hold the body of the product on the ground with your left hand. Pull the starter rope handle slowly with your right hand until you feel resistance. Then pull the starter rope handle quickly and with force until engine starts or tries to start.



7 Move choke lever DOWN to RUN position.



8 If the engine starts, push the throttle trigger lightly and warm-up 60 seconds. If the engine does not start, pull the starter rope handle until engine starts, push the throttle trigger lightly and warm-up 60 seconds.



9 Squeeze throttle trigger to operate.

