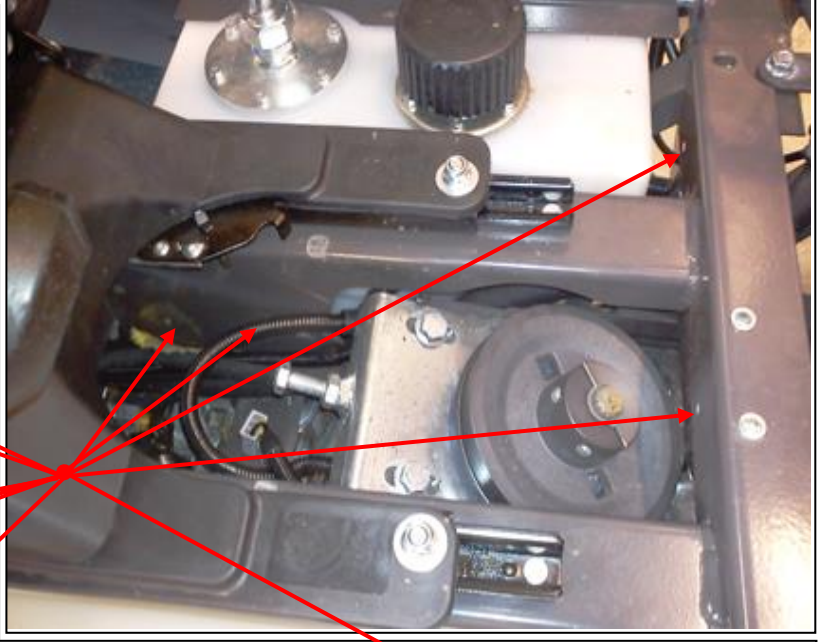
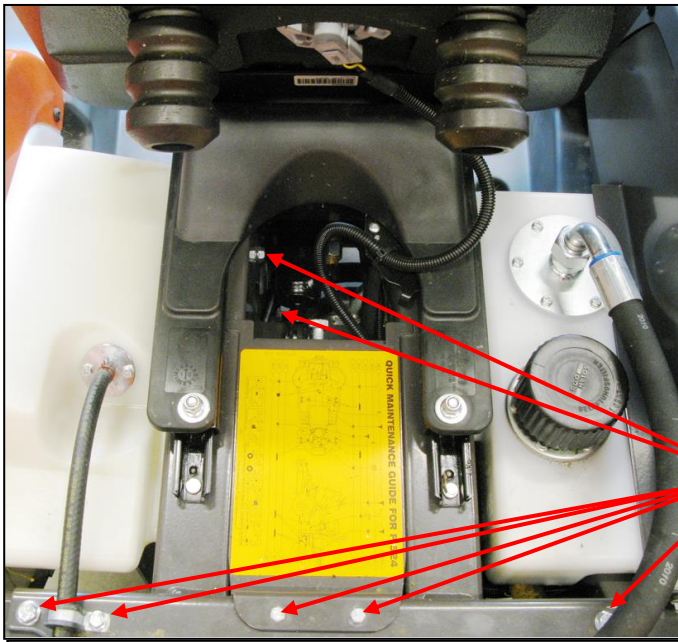
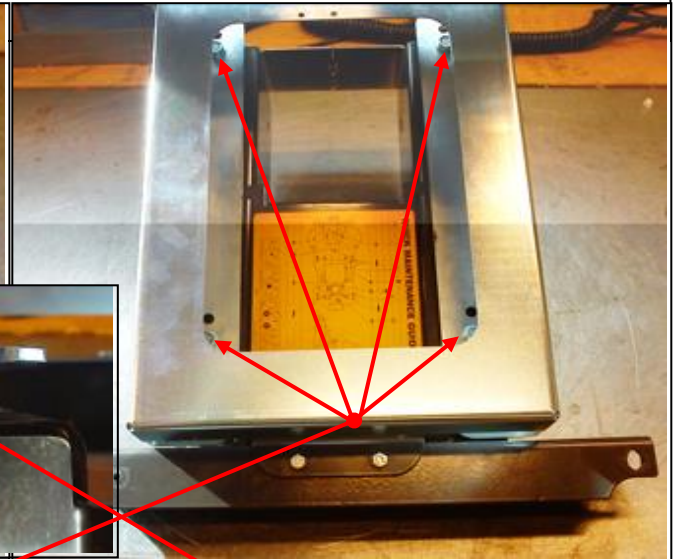
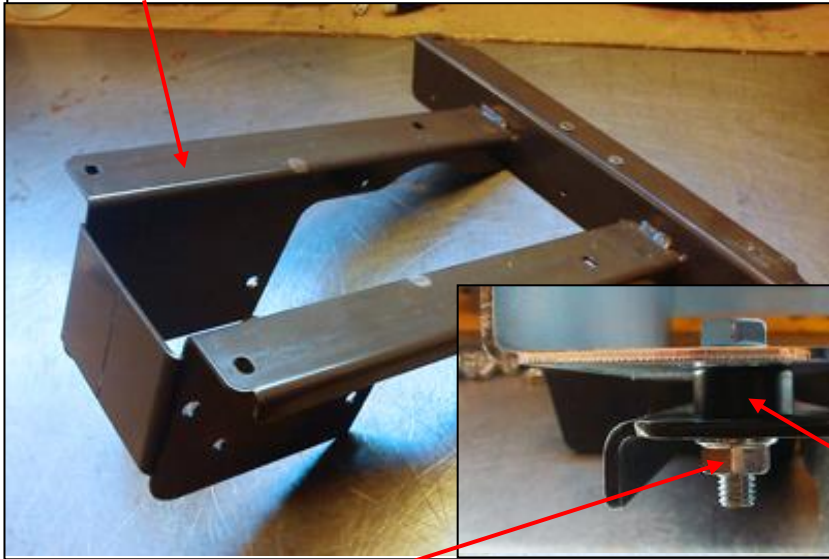


Mounting Instructions

P524

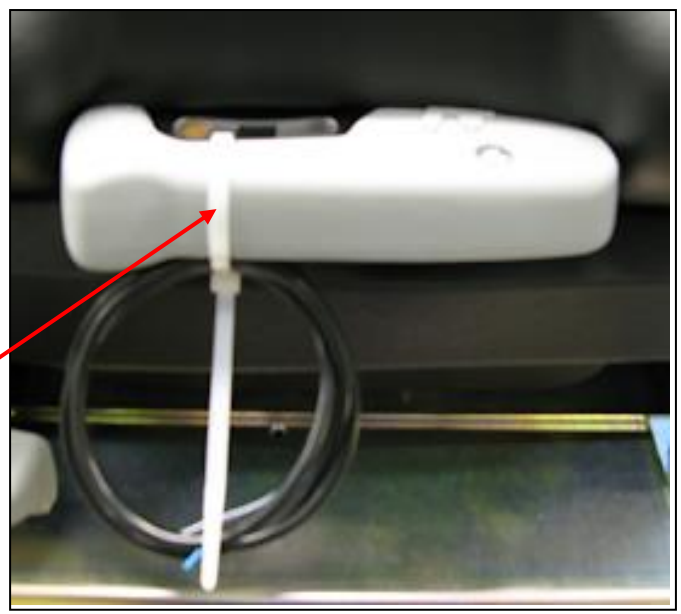


Loosen the original seat by loosening the entire seat console of the machine. Remove **these** screws. Then loosen the seat of the **console**.

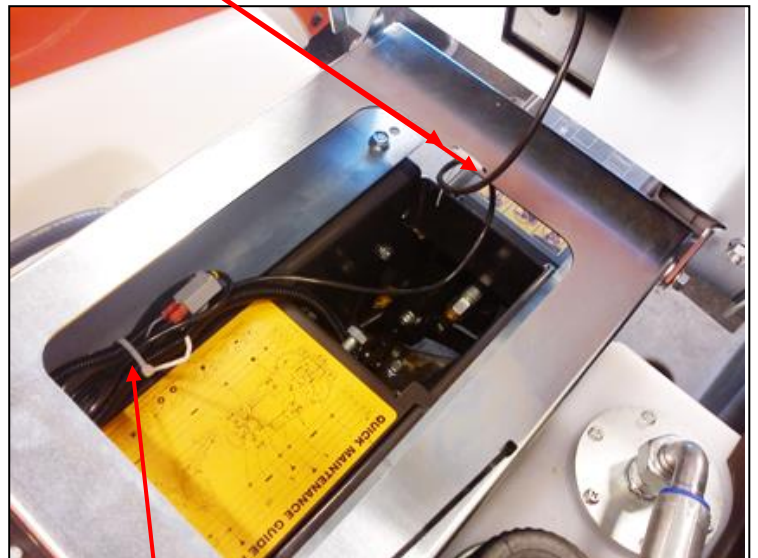


Attach the bottom part of the adapter bracket to the console using **four** M8*30mm and **10 mm distance** between the console and bracket, with a **nut** on the underside of the console, then mount the **upper part of the adapter bracket** onto the bottom part of the bracket, using the **shoulder screw and washers and lock nut**. Install the **socket head bolt** into the threaded hole, the bolt is mounted from underneath, you should only screw the bolt through about 1 cm through the plate before the seat is mounted on to the console, as this act as a stop for the fore/aft adjustment. Now mount the console back on to the machine.





Mount the seat on to the console using 4 pcs M8*16 mm bolts, and the locknut, mount the seat using the slide rails rear hole. Loosen the cable tie holding the cable to the seatswitch, pull the cable underneath the seat and through the hole in the upper plate of the console, attach the cable with two cable ties in the bottom part of the console, ensure that the cable is attached so it can not be pinched or rubbed off when you fold the seat forward or move the seat back and forth.



Remove the plastic part and spring in the middle of the connector. Connect the cable to the seat switch from the new seat by insert the spade connectors to the existing contact. Attach the wiring so it can not be trapped or caught in something. Now you can screw the socket head screw as far as it goes. Fold back seat, and now the assembly is complete.

