



# QUICK GUIDE



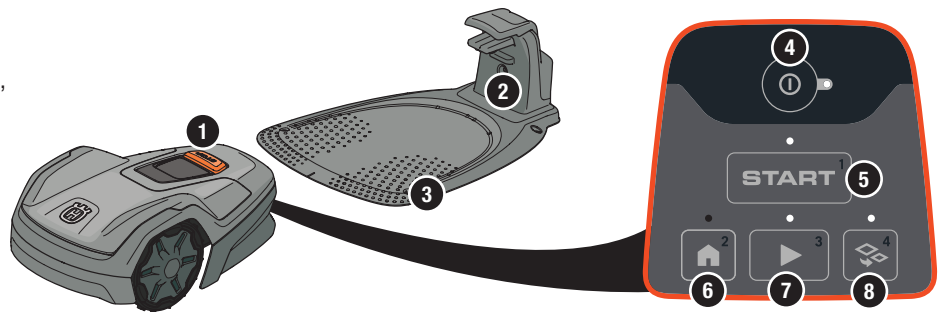
**HUSQVARNA® AUTOMOWER® ASPIRE™ R4**



# GETTING STARTED WITH THE ASPIRE™ ROBOTIC LAWN MOWER

For more information and instructions, please read the Operator's manual or visit [www.husqvarna.com](http://www.husqvarna.com).  
Installation support videos can be found on [www.husqvarna.com](http://www.husqvarna.com).

1. STOP button
2. LED for function check of the charging station, boundary and guide wires
3. Charging station
4. ON/OFF button
5. Start button
6. Park button
7. Play button
8. Secondary area button



## Power supply

(The appearance of the power supply may differ depending on market)



## Low-voltage cable

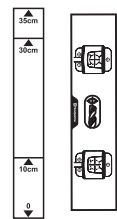


## Boundary wire, couplers, stakes, connectors

(Included in the installation kit)



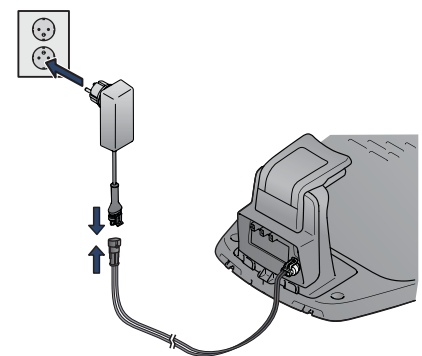
## Storage hooks



## Measurement gauge and drilling template

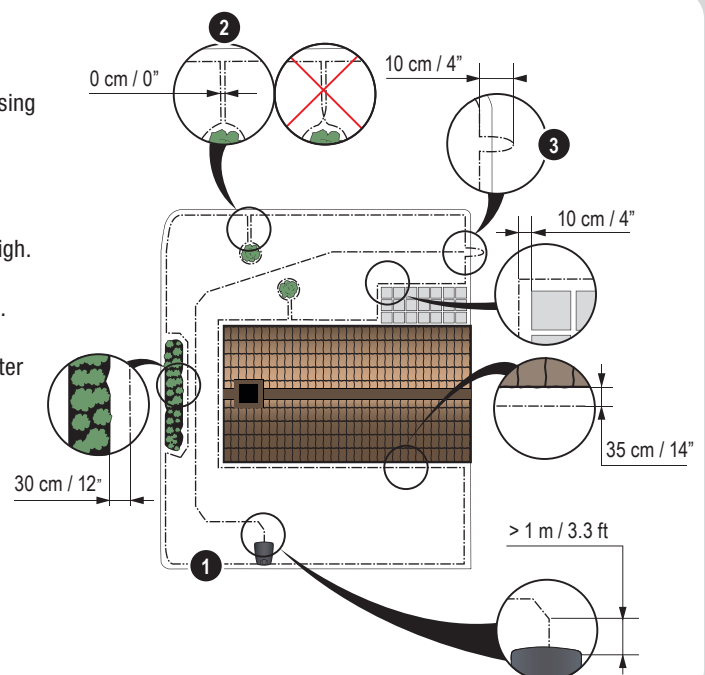
## 1. To install the charging station

1. Place the charging station on a flat level surface where there is open space.  
**NOTE:** To place the charging station in a limited space or in a corner, please read the Operator's manual.
2. Connect the low voltage cable to the charging station and the power supply.
3. If outdoor, put the power supply at a minimum height of 30 cm / 12 in from the ground.
4. Connect the power supply to a 100-240 V wall socket.
5. Place the robotic lawn mower in the charging station.
6. Push the **ON/OFF** button to switch on the robotic lawn mower and to charge the battery while the boundary wire is laid.  
**NOTE:** Do not continue with any product settings before the installation is complete.



## 2. To install the boundary wire

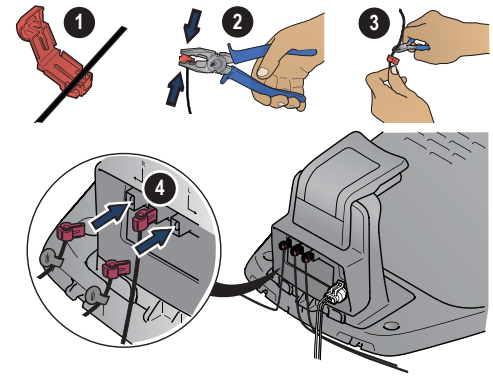
1. Lay the boundary wire so that it forms a loop around the whole work area using stakes supplied or bury the wire.  
**NOTE:** Do not lay the boundary wire in sharp bends.
2. Adapt the distance between the boundary wire and different objects.
  - A. Lay the boundary wire around all work area in a loop.
  - B. Put the boundary wire 35 cm from an obstacle that is more than 3.5 cm high.
  - C. Put the boundary wire 30 cm from an obstacle that is 1-3.5 cm high.
  - D. Put the boundary wire 10 cm from an obstacle that is less than 1 cm high.
  - E. Make an island to isolate areas.
3. Make an eyelet at the point on the boundary wire where the guide wire is later connected.
4. To handle slopes, passages and secondary areas, refer to the Operator's manual.



### 3. To connect the boundary wire

1. Open the connector and lay the boundary wire in the connector.
2. Press the connector and the wire together by using a pair of pliers.
3. Cut off the wire 1-2 cm / 0.4-0.8 in. after the connectors.
4. Press the boundary wire connectors onto the contact pins marked L (left) and R (right) on the charging station.

**NOTE:** The right-hand wire must be connected to the right-hand contact pin on the charging station, and the left-hand wire to the left-hand pin.



### 4. To install and connect the guide wire

Install a guide wire to lead the robotic lawn mower to remote parts of the lawn and to help it to find the charging station.

1. Push the guide wire through the bottom of the charging station and fasten it into place using the snap locks.
2. Fit the connector to the guide wire in the same way as for the boundary wire, according to the instructions above.
3. Press the guide wire connector onto the contact pin marked GUIDE on the charging station.
4. Pull the guide wire a minimum of 1 m / 3.3 ft. straight out from the front edge of the charging station.

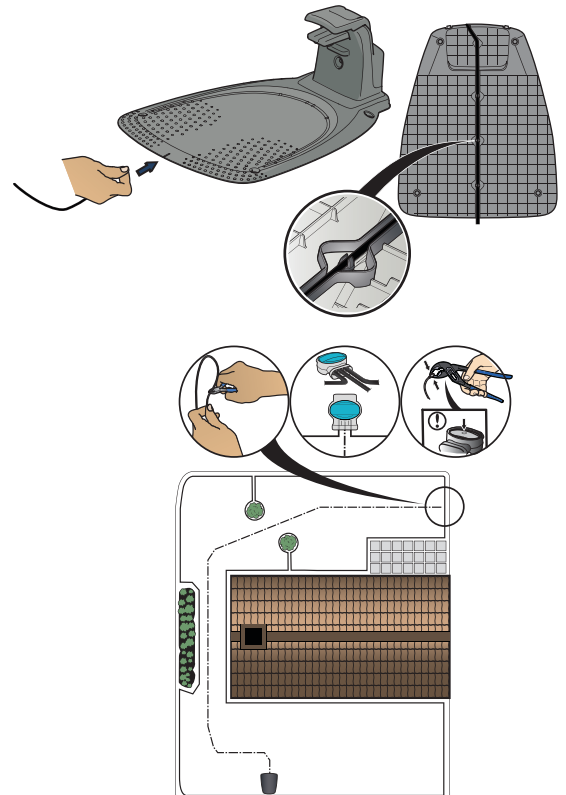
5. Lay the guide wire from the charging station to the point on the boundary wire (eyelet) where the connection is made using stakes supplied or bury the wire.

**NOTE:** Do not lay the guide wire in sharp bends. The guide wire cannot cross the boundary wire that for instance is laid out for an island.

6. Cut the boundary wire at the center of the eyelet that was made in step 2.3.
7. Connect the guide wire to the boundary wire by inserting the boundary wires and guide wire in the coupler, and pressing the coupler together with a pair of pliers. Make sure that the coupler is fully pressed together.

**NOTE:** After the guide wire is installed, attach the charging station to the ground with the supplied screws and allen key.

**NOTE:** For optimal performance through narrow passages please ensure the guide wire is laid correctly through it. Please read the Operator's manual for further instructions.



### 5. To start and stop the robotic lawn mower

#### To start the product

1. Push the **ON/OFF** button for 3 seconds.
2. Enter the PIN code.
3. Select the operating mode.
4. Push the **START** button.

#### To stop the product

1. Push the **STOP** button.

### Storage hooks

Two storage hooks are included with your robotic lawn mower for off season storage.

Use the drill template to install the storage hooks on the wall.

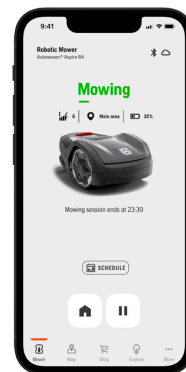


## To pair the robotic lawn mower and the app

The Automower® Connect app is a free app for your mobile device. The app is used for the settings and operation of the robotic lawn mower.

1. Download the Automower® Connect app from App Store or Google Play.
  2. Sign up and specify an e-mail address and a password to create a Husqvarna account.
  3. Log in to your Husqvarna account in the app.
  4. Set the product to ON.
- NOTE:** The Bluetooth® pairing mode is active for 3 minutes.
5. Select *My mowers* in the Automower® Connect app, and then select the plus sign (+).
  6. Follow the instructions in the app.

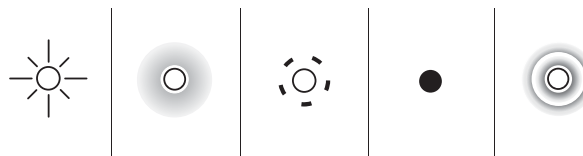
If the robotic lawn mower is connected to your Wi-Fi network you can control it with the Automower® Connect app from everywhere. With Bluetooth® connection you can control the robotic lawn mower within short range up to 30 m.



## LED status indicator on the keypad

The LED status indicator lamps on the keypad shows the status of the robotic lawn mower. The buttons on the keypad with flashing lights are the available operating modes for the robotic lawn mower that you can select. You must enter the PIN code before you can select an operating mode.

If the robotic lawn mower is parked, push the **STOP** button and the robotic lawn mower is set to idle mode where you can set an operating mode.



**Standby**



**Waiting for PIN code**



**Parked**



**Firmware installation  
in progress**



**Firmware error**



**Idle**



**Cutting to the set  
Schedule or  
Override Schedule**



**Cutting Secondary area**



**Error**



**Charging**

App Store and Apple logo are trademarks of Apple Inc.

Google Play and the Google Play logo are trademarks of Google LLC.

Automower® is a registered trademark of Husqvarna AB.  
Copyright © 2023 Husqvarna AB (publ). All rights reserved.