

Illustrated part list IPL update

Instruction

Husqvarna Division; Handheld

Husqvarna



Product Name(s)

525L

Description of change

1. Change of supplier

Comments

1. Below items are fully interchangeable

New part no	Name	Excl. part no.
590710101	SPARK PLUG	576598101
597648101	BEARING	506610301
586656602	CRANKSHAFT	586656601
579645713	TANK CAP	579645703
581110502	DRIVE SHAFT	581110501
597967305	HOSE ASSY	579210302
588171401	SPACER	521769701
580523602	MUFFLER ASSY	580523601
581308602	CRANKCASE	581308601
596968101	DIAPHRAGM PUMP	502213601
521578301	PISTON ASSY	584901201

2. Starter and Starter pulley assembly are interchangeable. However, sub-component are not interchangeable.
Assy sub-component must be changed according to the assy structure. Mixing new sub-component with old article assembly is not allowed, and vice versa. For Up to s/n 20202499999, must replace with complete assy.

3. Ignition coil and flywheel are not interchangeable and must be replaced according to its partner article. Mixing between old article ignition coil/flywheel with new article flywheel/ignition coil is not allowed. For Up to s/n 20202499999, must replace with complete assy.

Introduced from

Serial number / Date	Remark
20202500001	From December 2020 production, all finished goods have new component

Illustrated part list IPL update

Instruction

Husqvarna Division; Handheld

Husqvarna



IPL updates

Page Title	Ref. no	New part no	Name	Excl. part no.	Remark
Ignition & clutch	6	590710101	SPARK PLUG	576598101	
Crankshaft	5	597648101	BEARING	506610301	
Crankshaft	6	586656602	CRANKSHAFT	586656601	
Fuel tank	5	579645713	TANK CAP	579645703	
Starter	1	596330401	STARTER PULLEY	581146501	
Starter	2	501939001	E-RING		From s/n 20202500001
Starter	3	596330801	SPRING		From s/n 20202500001
Starter	4	596330501	RATCHET		From s/n 20202500001
Starter	5	596249001	STARTER ASSY	578992501	
Starter	7	596248901	ROPE		From s/n 20202500001
Starter	8	596247701	STARTER PULLEY		From s/n 20202500001
Starter	9	596248601	SPIRAL SPRING		From s/n 20202500001
Shaft & handle	13	581110502	DRIVE SHAFT	581110501	
Ignition & clutch	17	587252001	FLYWHEEL		From s/n 20202500001
Ignition & clutch	17	578967801			Up to s/n 20202499999
Ignition & clutch	1	587294701	IGNITION COIL		From s/n 20202500001
Ignition & clutch	1	588141501			Up to s/n 20202499999
Ignition & clutch	2	588945901	IGNITION CABLE		From s/n 20202500001
Ignition & clutch	3	588945601	TUBE		From s/n 20202500001
Ignition & clutch	4	588945801	SPARK PLUG CAP		From s/n 20202500001
Ignition & clutch	5	588945701	SPRING		From s/n 20202500001
Fuel tank	2	597967305	HOSE ASSY	579210302	
Ignition & clutch	8	588171401	SPACER	521769701	
Cylinder, piston & muffler	10	580523602	MUFFLER ASSY	580523601	
Crankcase	11	581308602	CRANKCASE	581308601	
Carburetor	6	596968101	DIAPHRAM PUMP	502213601	
Carburetor	16	521578301	PISTON ASSY	584901201	

Illustrated part list IPL update

Instruction

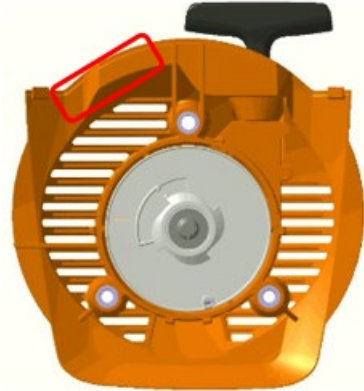
Husqvarna Division; Handheld

Husqvarna



1. Starter Assembly

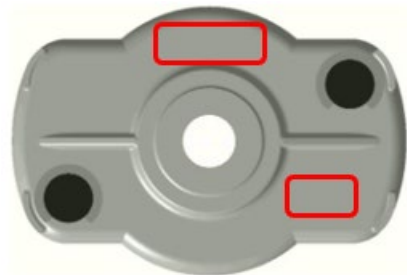
Refer to Article No. of starter assembly to determine sub-component article



2. Starter pulley assembly

Refer to Article No. of starter pulley assembly to determine sub-component article

*Old component does not have Article No. printed on the part.



3. Ignition coil and flywheel

Refer to article No. of ignition coil to determine its partner flywheel.

To identify Ig coil, refer to article no

To identify flywheel, refer to design

578967801 flywheel have different design compare to 587252001



578967801



587252001