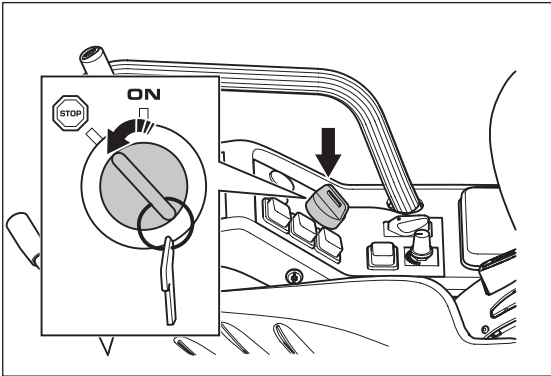


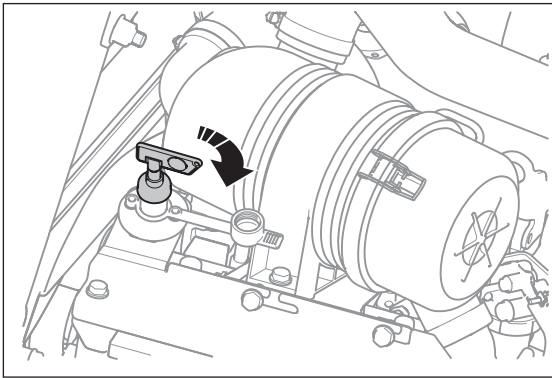
Connection guide P 535HX

CAN bus and Husqbus to HSH

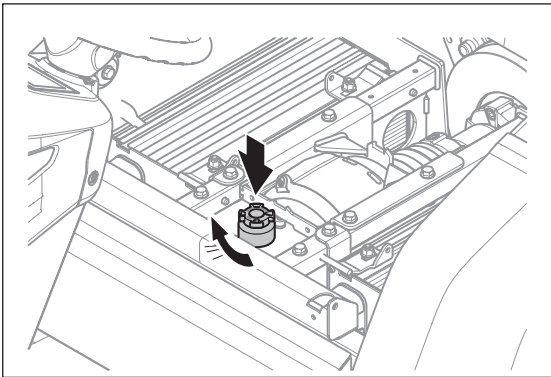
1. Set Power key in **STOP (OFF)** position



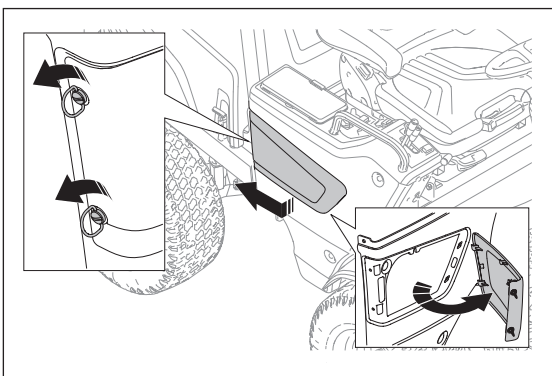
2. Push down and turn the main switch to the ON position



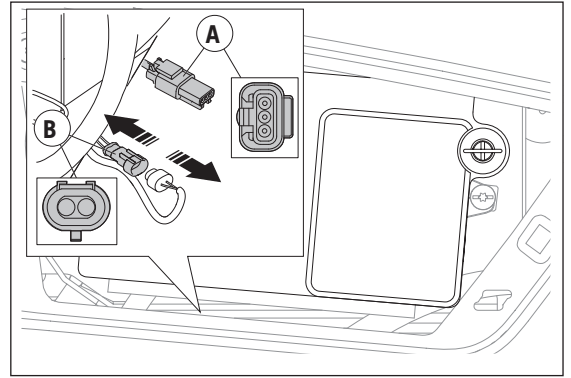
3. Make sure that 48V servicing plug are installed



4. Remove the service lid by unscrewing the 2 screws

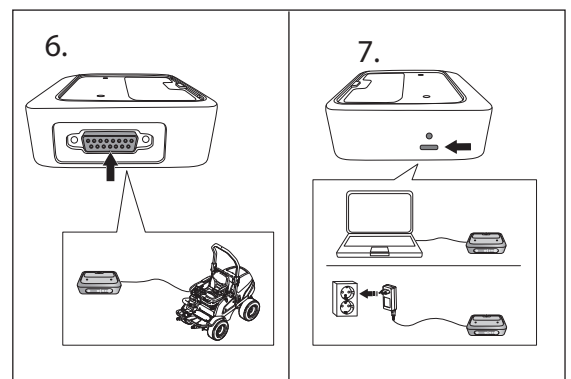


5. Identify the Husqbus (A) and CAN bus (B) connectors

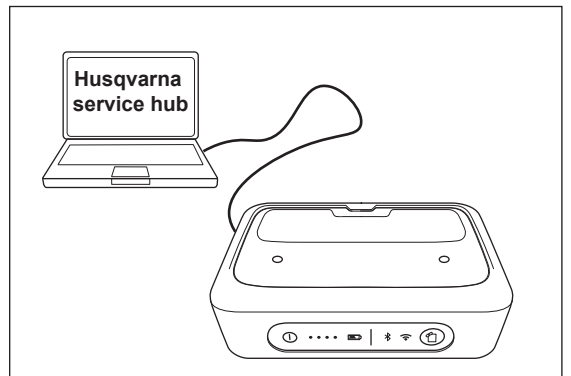


6. Connect the CAN bus and Husqbus connectors to the Husqvarna Service Interface Box

7. Connect the Husqvarna Service Interface Box to the computer



8. Start up the Husqvarna Service Hub program on the computer



9. Turn the Power key to **ON** position and follow further instructions in the Husqvarna Service Hub program

