

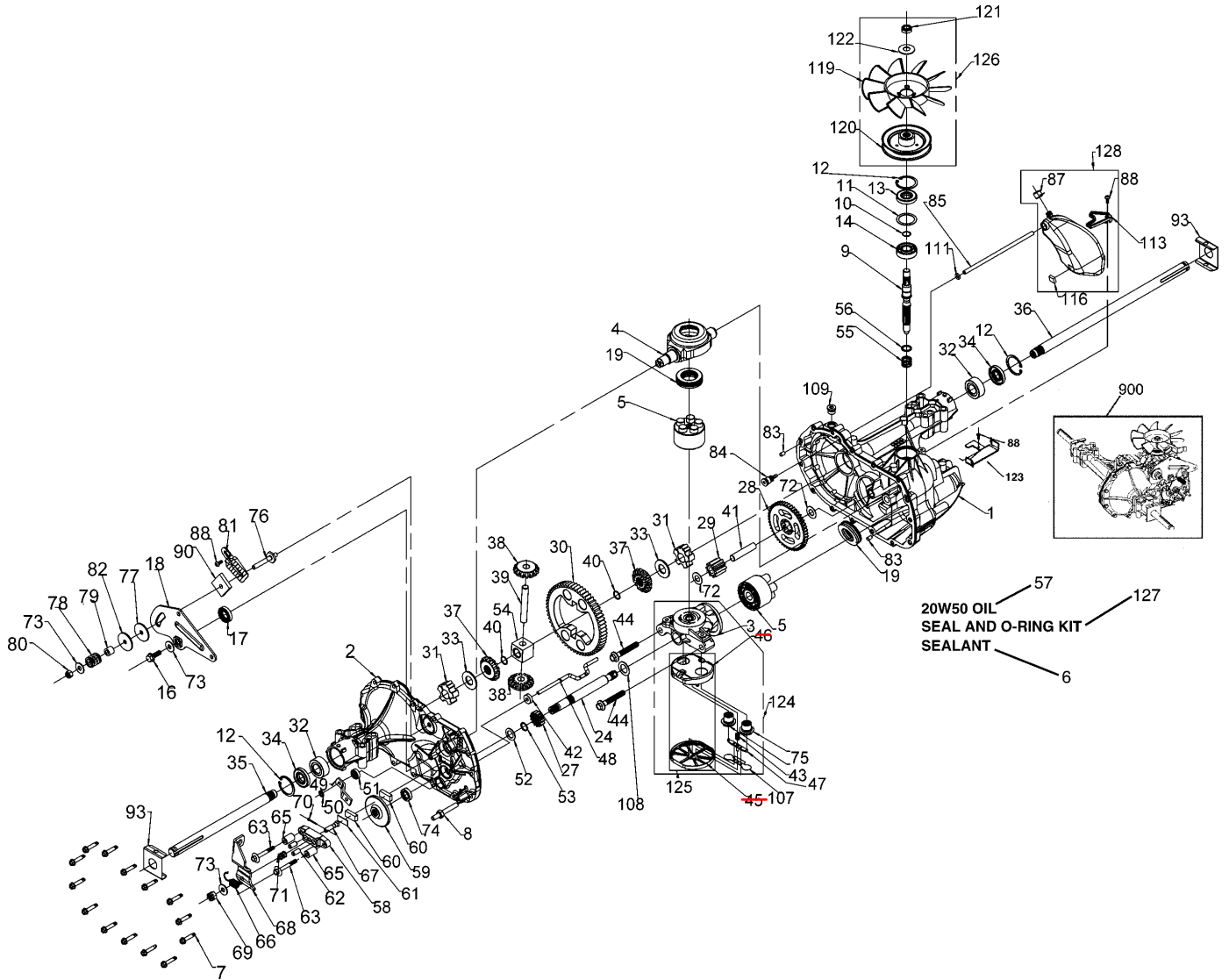
ILLUSTRATED PARTS BREAKDOWN

HYDRO-GEAR TRANSAXLE

MODEL NO. 321-0510

(FHP PART NO.170061)

HYDRO-GEAR TRANSAXLE - - MODEL NUMBER 321-0510



HYDRO-GEAR TRANSAXLE - - MODEL NUMBER 321-0510

KEY PART NO. NO.	DESCRIPTION	KEY PART NO. NO.	DESCRIPTION		
1	532 17 03-51	Main Housing, Assembly	60	532 14 28-83	Brake Puck
2	532 17 03-52	Side Housing, Assembly	61	532 14 28-82	Puck Plate
3	532 17 03-53	Center Section, Assembly	62	532 14 28-87	Brake Actuating Pin
4	532 17 03-54	Swashplate, Trunion Machined	63	532 17 04-10	HFHCS 1/4-20X2 W/Patch, Special Flange
5	532 16 98-98	Block - Assembly			Bolt, 1/4-20 X 1 W/Patch
6	532 17 03-55	Sealant	64	532 14 28-92	Spacer
7	532 17 03-56	Hex Flange Screw 1/4-20 X 1.25	65	532 17 04-11	Spring, Brake Arm Bias
8	532 17 03-57	Stud, 5/16-24 Hex Double End	66	532 17 04-12	SQ. HD. BOLT 5/16-24-Ribbed
9	532 17 03-58	Shaft, Input	67	532 17 04-13	Arm, Brake
10	532 17 03-59	Ring - Retaining	68	532 17 81-57	Slotted Hex Nut 5/16-24
11	532 17 03-60	Spacer	69	532 17 04-15	Cotter Pin 3/32 X 3/4
12	532 16 98-70	Ring - Retaining	70	532 17 04-16	Compression Spring Brake Anti-Drag
13	532 17 03-61	Seal, Lip .67 X 1.58 X .276	71	532 17 04-17	Washer, HT .5 I.D. X 1 O.D. X .032
14	532 17 31-58	Ball Brg 17MM ID X 40MM OD X 12MM	72	532 17 04-18	Flat - Washer 11/32 I.D. X 7/8 O.D.
16	532 17 03-62	Hex Flange Head Screw 5/16-24 X 0.75	73	532 14 28-84	Oil Seal .625 X 1.0 X .25
17	532 17 03-63	Lip Seal 18 X 32 X 7	74	532 17 04-19	Check Plug Assembly, .027, Washer
18	532 17 03-64	Arm, Control	75	532 17 04-20	Stud, 5/16-24 Friction Pack
19	532 17 31-59	Bearing, 30X52X13 Thrust	76	532 17 04-21	Puck, .330 X 1.50 X .0975
23	532 17 036-5	Check Plug Assembly, Washer	77	532 17 04-22	Spring, Helical Comp
24	532 17 03-66	Shaft, Motor1	78	532 14 29-69	Spacer
27	532 17 03-67	Gear - Pinion, 13T	79	532 14 29-80	Hex Lock Nut 5/16-24 UNJF(Nylon Insert)
28	532 17 03-68	10T/48T GEAR			Wedge, Friction Pack
29	532 17 03-69	Gear, 10T Jackshaft	81	532 17 04-23	Clip, Washer .316X1.50X.1046 (Plated)
30	532 17 03-70	60T Bull Gear	82	532 17 04-24	Pin, Standard Headless
31	532 17 03-71	Sleeve Bearing .75 X 1.575 X .625	83	532 16 11-68	Fitting, 5/16 Sae 5/32 Tube
32	532 17 03-89	Sleeve Bearing (Outboard).75X1.750X.625	84	532 17 04-25	Hose, Expansion Tank
33	532 14 299-1	Washer, 3/4 ID X 1-1/2 OD X .13 THK	85	532 17 04-26	Cap, Vent
34	532 17 03-90	Lip Seal Axle Seal	87	532 17 31-60	Bolt, Self Tapping 10-32 X 1/2
35	532 17 03-91	Shaft, Axle .75 X 11.39 (Key, R.H.)	88	532 17 04-29	Puck, Inner Wedge
36	532 17 03-92	Shaft, Axle .75 X 16.99 (Key, L.H.)	90	532 17 04-30	Spring Clip - Housing Thrust
37	532 15 07-92	Miter Gear (SPLINED)	93	532 17 04-31	Deflector
38	532 15 07-93	Miter Gear 15T (0.5 ID)	107	532 17 04-32	Washer, Motorshaft .71IDX1.15ODX.030THK
39	532 15 08-09	Shaft	108	532 17 04-33	Plug, Sae #6
40	532 17 03-93	Ring, Spiral Retaining	109	532 17 04-34	O-ring .07 x .301 I.D.
41	532 17 03-94	Pin, Jackshaft	111	532 17 04-35	Bracket, Support Expansion Tank
42	532 17 03-95	Magnet, Rling	113	532 17 04-37	Silicon Sponge
43	532 17 03-96	Spring, Bypass	116	532 17 04-38	Fan
44	532 15 07-97	Hydro mtg Screw 3/8-24 X 2.5 Long	119	532 17 04-39	Pulley
45	532 17 03-97	Filter	120	532 17 81-59	Hex Lock Nut 1/2-20
46	532 17 03-98	Base, Filter	121	532 17 04-41	Washer Belleville
47	532 17 03-99	Actuator, Bypass	122	532 17 04-42	Bracket Belt Keeper
48	532 17 04-00	Rod, Bypass Actuator	123	532 17 81-60	Center Section-Filter-Bypass Assembly
49	532 17 81-56	Arm, Bypass	124	532 17 04-44	Filter Assembly
50	532 17 04-02	Retaining Ring .250 External	125	532 17 04-45	Fan - Pulley Service Assembly
51	532 17 04-03	Seal, Lip .741 X .250 X .250 TC	126	532 17 84-17	Seal - O-ring Kit
52	532 17 04-04	Flat Washer, 5/8 ID X 1.0 OD X .05 THK	127	532 17 04-47	Kit, Expansion Tank
53	532 17 04-05	Retaining Ring	128	532 17 31-65	Transaxle, complete
54	532 17 04-06	Bearing, Center Block			
55	532 14 29-77	Spring - Helical Compression	900	532 17 16-13	
56	532 14 29-78	Washer			
57	532 15 07-98	20W-50 OIL72.8 oz			
58	532 17 04-07	Brake Yoke			
59	532 17 04-08	Rotor, Brake			

Correction: 532 17 00-61

NOTE: All component dimensions given in
U.S. inches 1 inch = 25.4 mm

Key No.

45 and 46 replaced by Key no. 125, Filter Assembly 532 17 04-45